



# Revision History

Revision	Date	Description
A	November 10, 2004	Initial release.

© 2004, Conexant Systems, Inc.  
All Rights Reserved.

Information in this document is provided in connection with Conexant Systems, Inc. ("Conexant") products. These materials are provided by Conexant as a service to its customers and may be used for informational purposes only. Conexant assumes no responsibility for errors or omissions in these materials. Conexant may make changes to this document at any time, without notice. Conexant advises all customers to ensure that they have the latest version of this document and to verify, before placing orders, that information being relied on is current and complete. Conexant makes no commitment to update the information and shall have no responsibility whatsoever for conflicts or incompatibilities arising from future changes to its specifications and product descriptions.

No license, express or implied, by estoppel or otherwise, to any intellectual property rights is granted by this document. Except as provided in Conexant's Terms and Conditions of Sale for such products, Conexant assumes no liability whatsoever.

THESE MATERIALS ARE PROVIDED "AS IS" WITHOUT WARRANTY OF ANY KIND, EITHER EXPRESS OR IMPLIED, RELATING TO SALE AND/OR USE OF CONEXANT PRODUCTS INCLUDING LIABILITY OR WARRANTIES RELATING TO FITNESS FOR A PARTICULAR PURPOSE, CONSEQUENTIAL OR INCIDENTAL DAMAGES, MERCHANTABILITY, OR INFRINGEMENT OF ANY PATENT, COPYRIGHT OR OTHER INTELLECTUAL PROPERTY RIGHT. CONEXANT FURTHER DOES NOT WARRANT THE ACCURACY OR COMPLETENESS OF THE INFORMATION, TEXT, GRAPHICS OR OTHER ITEMS CONTAINED WITHIN THESE MATERIALS. CONEXANT SHALL NOT BE LIABLE FOR ANY SPECIAL, INDIRECT, INCIDENTAL, OR CONSEQUENTIAL DAMAGES, INCLUDING WITHOUT LIMITATION, LOST REVENUES OR LOST PROFITS, WHICH MAY RESULT FROM THE USE OF THESE MATERIALS.

Conexant products are not intended for use in medical, lifesaving or life sustaining applications. Conexant customers using or selling Conexant products for use in such applications do so at their own risk and agree to fully indemnify Conexant for any damages resulting from such improper use or sale.

The following are trademarks of Conexant Systems, Inc.: Conexant® and the Conexant C symbol. Product names or services listed in this publication are for identification purposes only, and may be trademarks of third parties. Third-party brands and names are the property of their respective owners.

For additional disclaimer information, please consult Conexant's Legal Information posted at [www.conexant.com](http://www.conexant.com) which is incorporated by reference.

**Reader Response:** Conexant strives to produce quality documentation and welcomes your feedback. Please send comments and suggestions to [conexant.tech.pubs@conexant.com](mailto:conexant.tech.pubs@conexant.com). For technical questions, contact your local Conexant sales office or field applications engineer.

# Contents

- Figures ..... 5
- 1 Introduction ..... 7
  - 1.1 About This Manual ..... 7
  - 1.2 ATSC Background ..... 7
  - 1.3 ATSC Component Overview ..... 8
- 2 Prerequisites ..... 11
  - 2.1 System Requirements ..... 11
    - 2.1.1 Hardware ..... 11
    - 2.1.2 Software ..... 11
      - 2.1.2.1 Microsoft DirectX 9.0 SDK Installation ..... 11
      - 2.1.2.2 MPEG-2 Transport Stream Diagnostic Filter Installation (Optional) ..... 12
    - 2.1.3 System Setup ..... 12
- 3 Installations ..... 13
  - 3.1 Copy the Sample Application File ..... 13
  - 3.2 Install the ATSC Card ..... 13
  - 3.3 Install the Copied ATSC Driver Setup .exe File ..... 14
- 4 Functional Verification ..... 21
- A Graphedit Sample Graph ..... 23



# Figures

Figure 1. ATSC System Components .....	9
Figure 2. ATSC Card .....	13
Figure 3. ATSC BDA Sample Application Graph from Graphedit.....	23



# Introduction

---

## 1.1 About This Manual

This document describes how to install Conexant's CX23883 ATSC receiver card. The procedures include verifying that the ATSC card is functioning properly. The ATSC card, contained in the CX23883 ATSC Evaluation Kit (EVK), is a single-height card that plugs into an unused PCI slot in a Windows PC.

The ATSC card must be used in conjunction with an antenna to receive high-definition digital TV broadcasts.

This document is organized as follows:

- ◆ Chapter 1: Introduction. Provides an overview of this document and direct video broadcast
- ◆ Chapter 2: Prerequisites. Lists the prerequisites for performing the remainder of this document
- ◆ Chapter 3: Installations. Describes how to install the ATSC driver installation package, which includes the ATSC drivers
- ◆ Chapter 4: Functional Verification. Describes how to verify that the ATSC card works properly.

## 1.2 ATSC Background

Major portions of the ATSC standard (A/53) were adopted by the US FCC in December, 1996. In addition, Canada, South Korea, Taiwan, and Argentina have also adopted ATSC.

The CX23883 ATSC card supports the ATSC and NTSC standards, dependent upon configuration.

## 1.3 ATSC Component Overview

The CX23883 ATSC card contains three primary parts:

- ◆ CX23883 broadcast video decoder (also used in MPEG Personal Video Recorder and TVFM designs)
- ◆ Thomson DTT 7612 tuner
- ◆ Oren OR51132 demodulator

The system components required for receiving 8VSB signals, shown in [Figure 1](#), are:

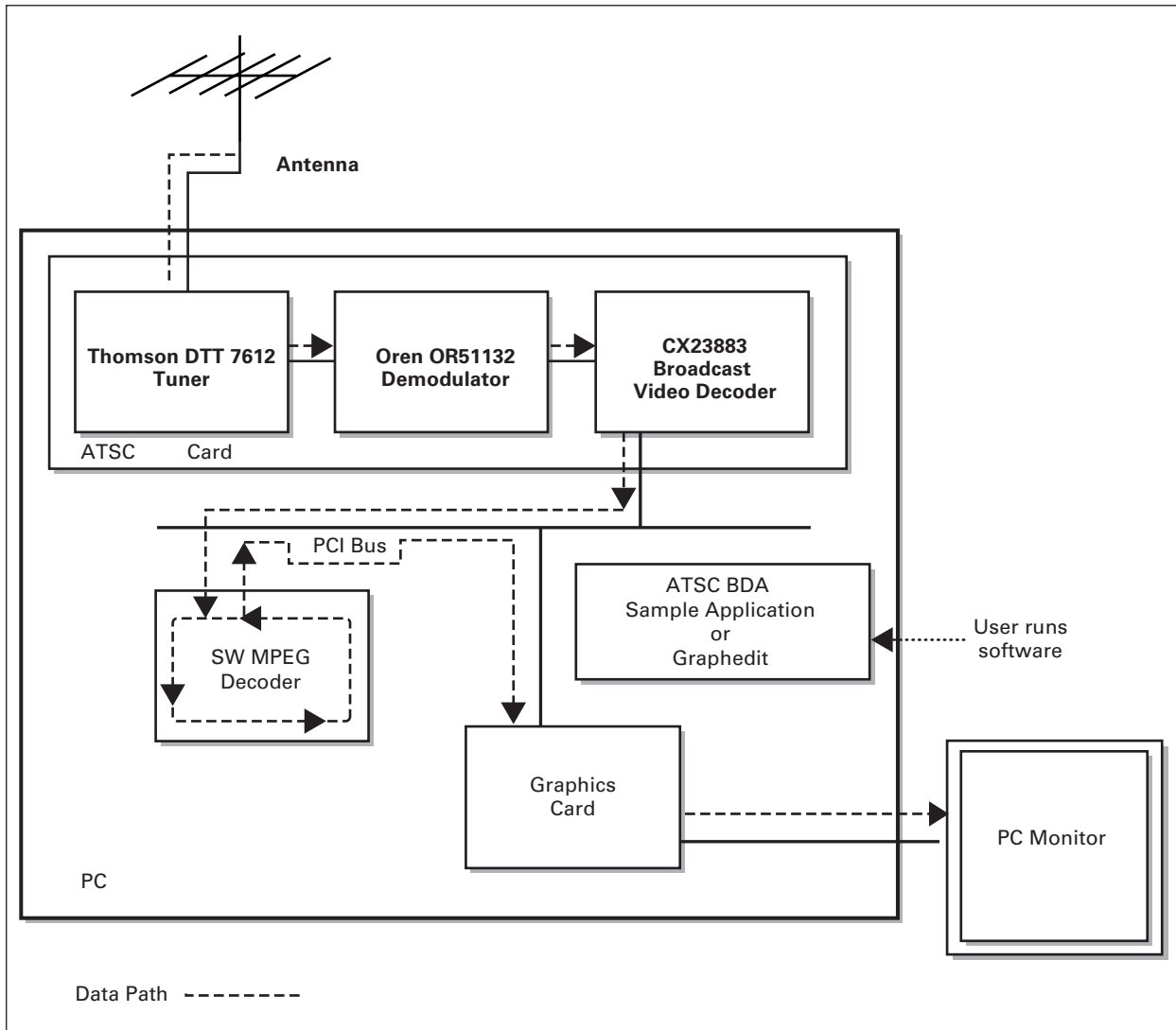
- ◆ Hardware:
  - CX23883 ATSC card
  - PC monitor
- ◆ Software:
  - ATSC BDA sample application or Graphedit software
  - Software MPEG decoder

The signal flow passes from the antenna to the PC monitor as follows:

1. The antenna, plugged directly into the ATSC card, transmits the 8VSB signal to the tuner.
2. The tuner passes the received signal to the Oren OR51132 demodulator.
3. The Oren OR51132 demodulator extracts the MPEG Transport Stream (TS).
4. The extracted MPEG TS passes to the CX23883 broadcast video decoder.
5. The CX23883 broadcast video decoder places the MPEG TS onto the PCI bus.
6. The MPEG decoder receives the MPEG TS through the PCI bus, decodes the MPEG TS, and passes the decoded data to the PC monitor.
7. A consumer runs application software ATSC BDA or Graphedit (installed on the PC) to view the decoded MPEG data stream on the PC monitor through the PCI bus.



Figure 1. ATSC System Components



102491\_001



# Prerequisites

---

This chapter describes the prerequisites for performing the remainder of this document.

## 2.1 System Requirements

### 2.1.1 Hardware

The minimum hardware requirements for running the test application used during ATSC card functionality verification are:

- ◆ PC running Windows XP, XP Pro, or XP MediaCenter (aka XP MCE) operating system
- ◆ Minimum 1 GHz PC (robust enough for SW MPEG decoding)
- ◆ High-end graphics adapter card

### 2.1.2 Software

The minimum software requirements for running the test application used during ATSC card functionality verification are as follows. To determine if the below software is present on the PC, select Start button > Settings > Control Panel > Add/Remove Programs

- ◆ Microsoft DirectX 9.0 SDK or later  
If not present, install per [Section 2.1.2.1](#).
- ◆ MPEG-2 software decoder (third-party software), such as InterVideo  
If using a PC running the XP Media Center operating system, an MPEG-2 software decoder was originally installed on the PC. If an MPEG-2 software decoder is no longer present on the PC, install it.
- ◆ Conexant's ATSC drivers  
If not present, copy the ATSC driver installation package (CX23880 setup .exe file) to your hard drive.
- ◆ Optional software for debugging: MPEG-2 transport stream diagnostic filter M2Tscope.ax  
If not present, install per [Section 2.1.2.2](#).

#### 2.1.2.1 Microsoft DirectX 9.0 SDK Installation

If DirectX 9.0 SDK or later is not installed, do one of the following:

- ◆ Download DirectX 9.0 SDK from Microsoft ([www.microsoft.com](http://www.microsoft.com)) by doing a search for the SDK on the Microsoft Web site, selecting the SDK for download, downloading it, and running the installer dx9sdk.exe or
- ◆ Install DirectX 9.0 SDK from disk by running the SDK installer dx9sdk.exe

### 2.1.2.2 MPEG-2 Transport Stream Diagnostic Filter Installation (Optional)

If an MPEG-2 transport stream diagnostic filter is needed for debugging, install M2Tscope.ax as follows:

1. Place a copy of M2Tscope.ax into \windows\System directory
2. Register M2Tscope.ax as follows:
  - a. Select Start > Run.
  - b. Enter **Regsvr32 \windows\system32\M2Tscope.ax**  
A message reports a successful installation.

### 2.1.3 System Setup

The system components must be set up for functional verification.

# Installations

At this point, you have performed the prerequisites, described in [Chapter 2](#).

This chapter describes how to perform the following procedures:

- ◆ Copy the sample application file
- ◆ Install the ATSC card
- ◆ Install the copied ATSC driver installation package

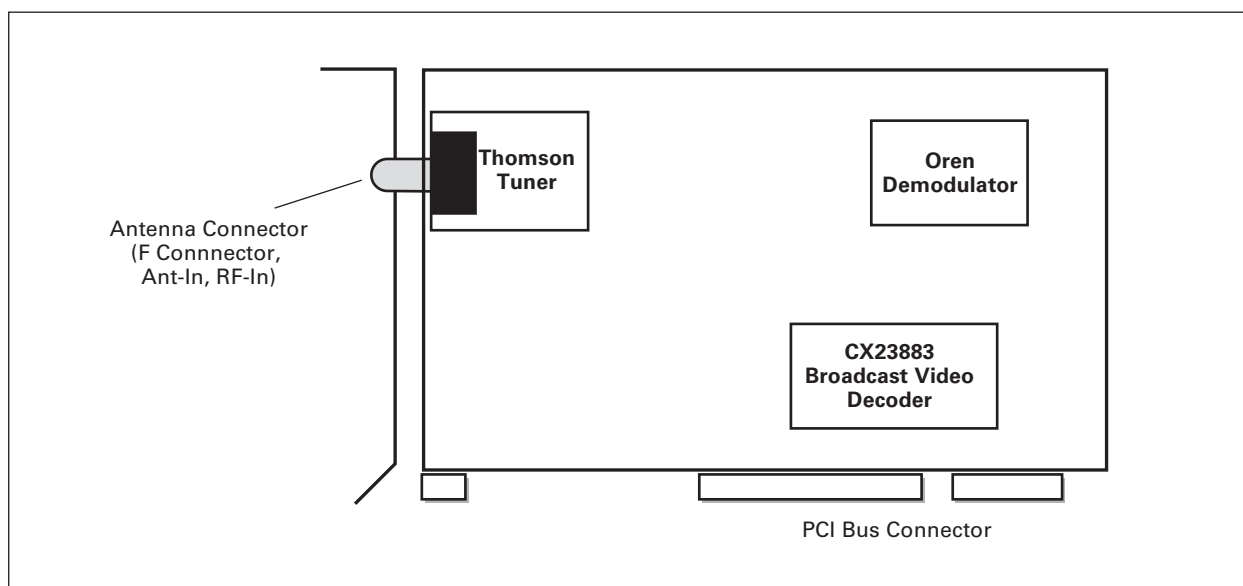
## 3.1 Copy the Sample Application File

Copy the Conexant sample application file, filename BDA ATSC.exe, to your PC desktop. The location of the sample application file to copy is stated in the EVK cover letter. You will execute and configure this file later, in [Chapter 4](#).

## 3.2 Install the ATSC Card

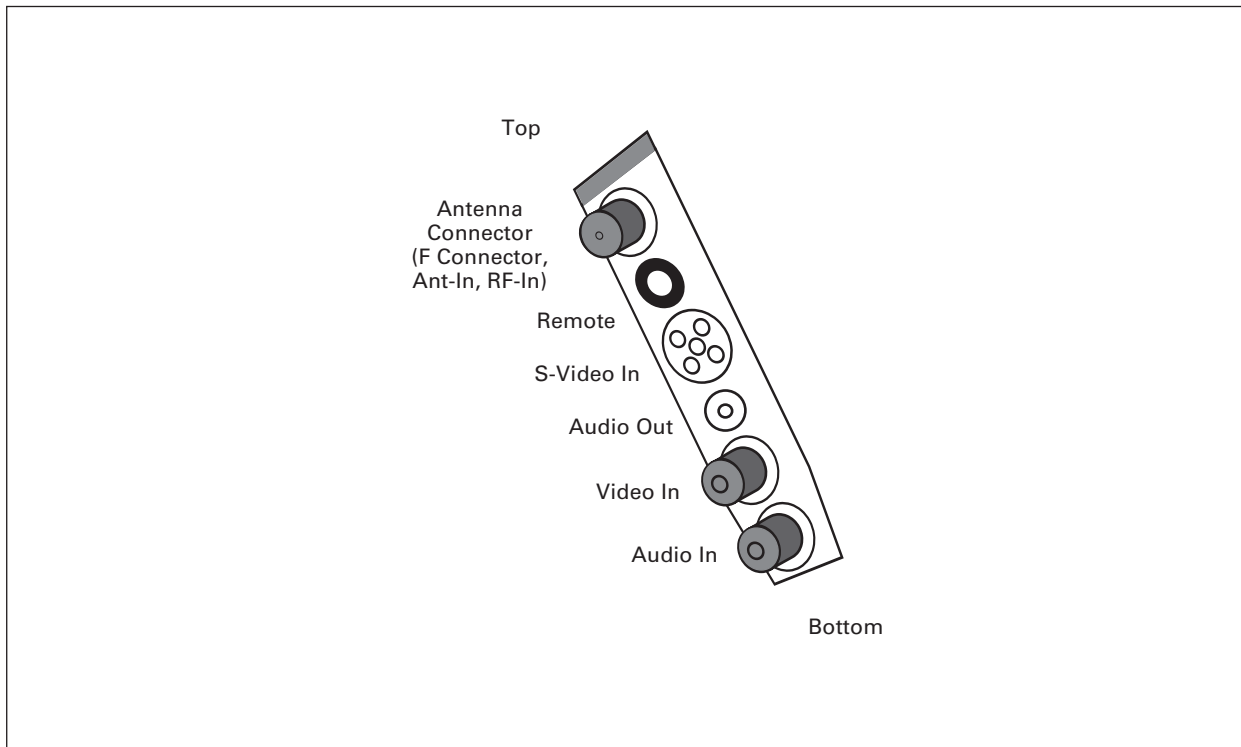
1. Power down the PC.
2. Install the Conexant ATSC card into a PCI slot. To ensure that you are installing a Conexant ATSC card, ensure that it contains the components specified in [Figure 2](#).

**Figure 2.** ATSC Card



102491\_005

3. Insert the RF connector into the "Antenna In" (F Connector, Ant-In, RF-In) connector at the top of the PCI card, as shown below.



102491\_006

4. Power up the PC.

### 3.3 Install the Copied ATSC Driver Setup .exe File

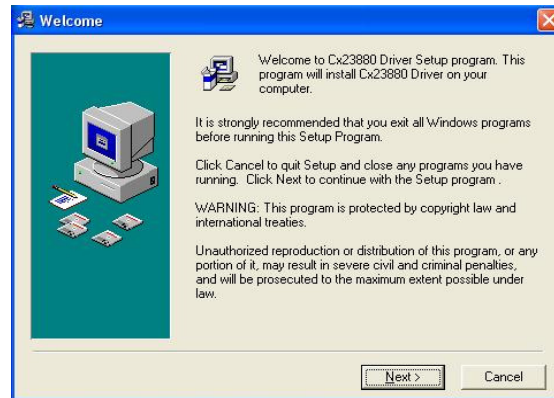
When you perform this step, you are executing the ATSC driver installation package (CX23880 setup .exe file) that you copied to your hard drive as needed in [Chapter 2](#).

1. Run the setup .exe file by double-clicking the CX23880Setup[version number].exe icon at its installed location.

An "Initializing Wise Installation Wizard" message appears for a few seconds, indicating that the setup process has started.



A warning appears, asking that you terminate any running programs.

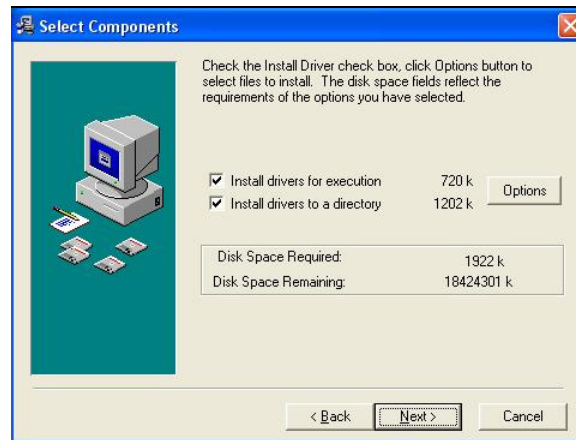


2. Terminate any running programs.
3. Click Next.  
A license agreement appears.
4. Review the license agreement.
5. Do one of the following:
  - if you accept the terms, click the Yes, I Agree radio button, then click Next to continue the installation process.
  - If you do not accept the terms, click the No, I Don't Agree radio button. You will not be able to continue the installation process.



The remainder of this procedure assumes that you clicked “Yes” in step 5. A Select Components window appears with both types of installations selected (the default):

- Install drivers for execution
- Install drivers to a directory.



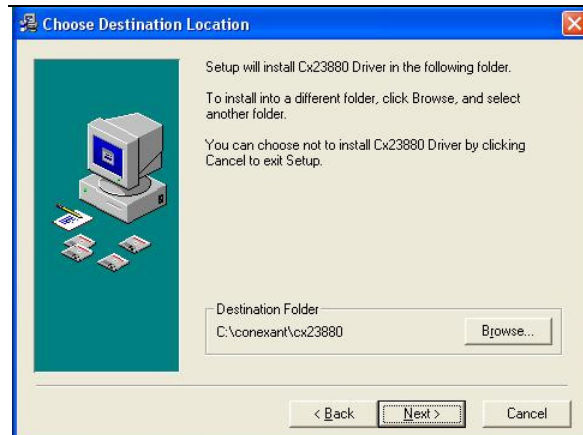
6. Keep both or only one checkmarked selection, as appropriate.
7. Make note of which selection or selections you have checkmarked; you will use this information later in this procedure.



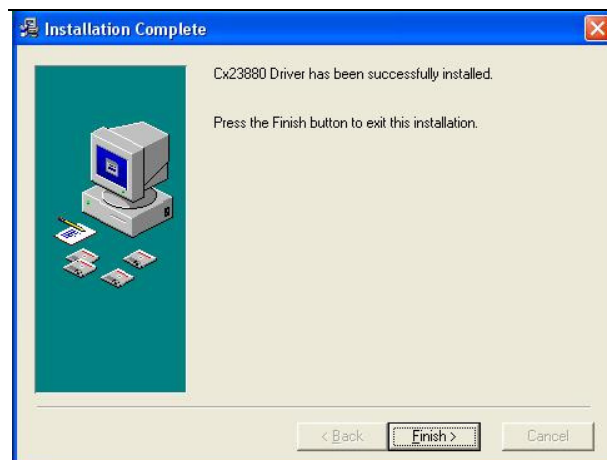
8. In the Select Components window, click Next.

One of the following occurs:

- If you checkmarked Install drivers to a directory location or both Install drivers for execution and Install drivers to a directory location in step 6, a Choose Destination window appears.



- If you checkmarked only Install drivers for execution in step , the Installation Complete window appears



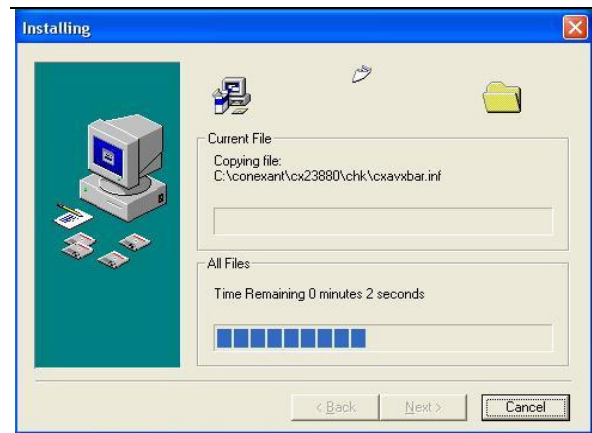
9. Do one of the following, depending on the type of window that is currently displayed:

- If a Destination window is displayed, continue with step 10.
- If an Installation Complete window is displayed, skip to step 11.

10. In the Choose Destination window, do one of the following:

- If you checkmarked *both* the Install drivers for execution selection and the Install drivers to a directory selection in the Select Components window in step 6, click Next.
- If you checkmarked only the Install drivers to a directory location in the Select Components window in step 6, click Browse or Next, as follows:
  - If you want to specify the driver directory destination, click Browse. In the resulting Select Destination Directory window, navigate to the desired location and then click OK.
  - If you want the drivers to be placed in the test application default location (C:\Conexant\CX23880), click Next.

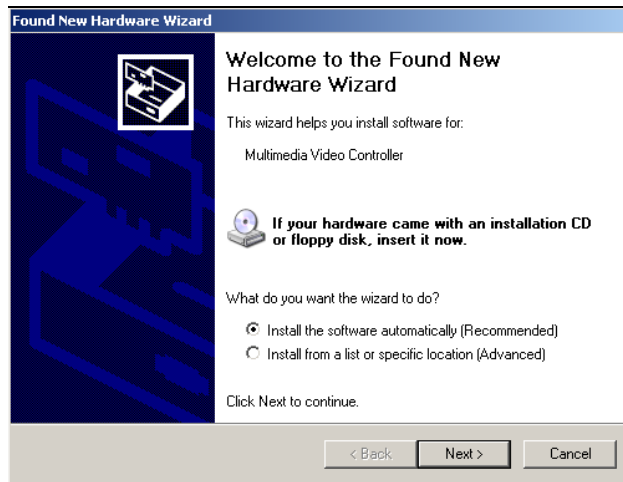
An Installing window appears while the software driver files copy to the specified or default location.



An Installation Complete window appears when the file copying is complete...

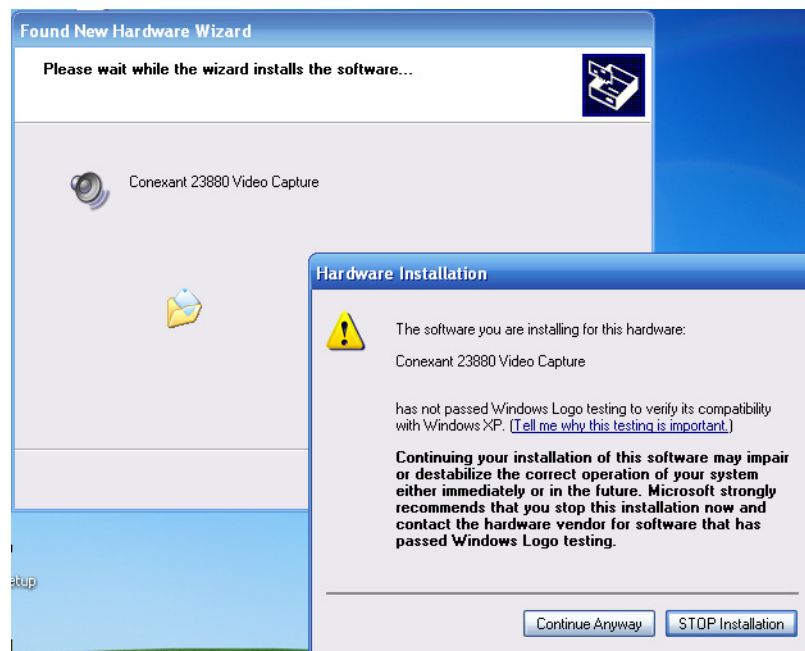


11. In the Installation Complete window, click Finish.  
The Plug-and-Play Hardware Wizard scans for hardware changes.  
When the Plug-and-Play Hardware Wizard finds the ATSC card, a Found New Hardware Wizard "Welcome" window appears that asks what you want the wizard to do. This is asking where you want the driver files to be installed



12. Select Install the software automatically (recommended).
13. Click Next.

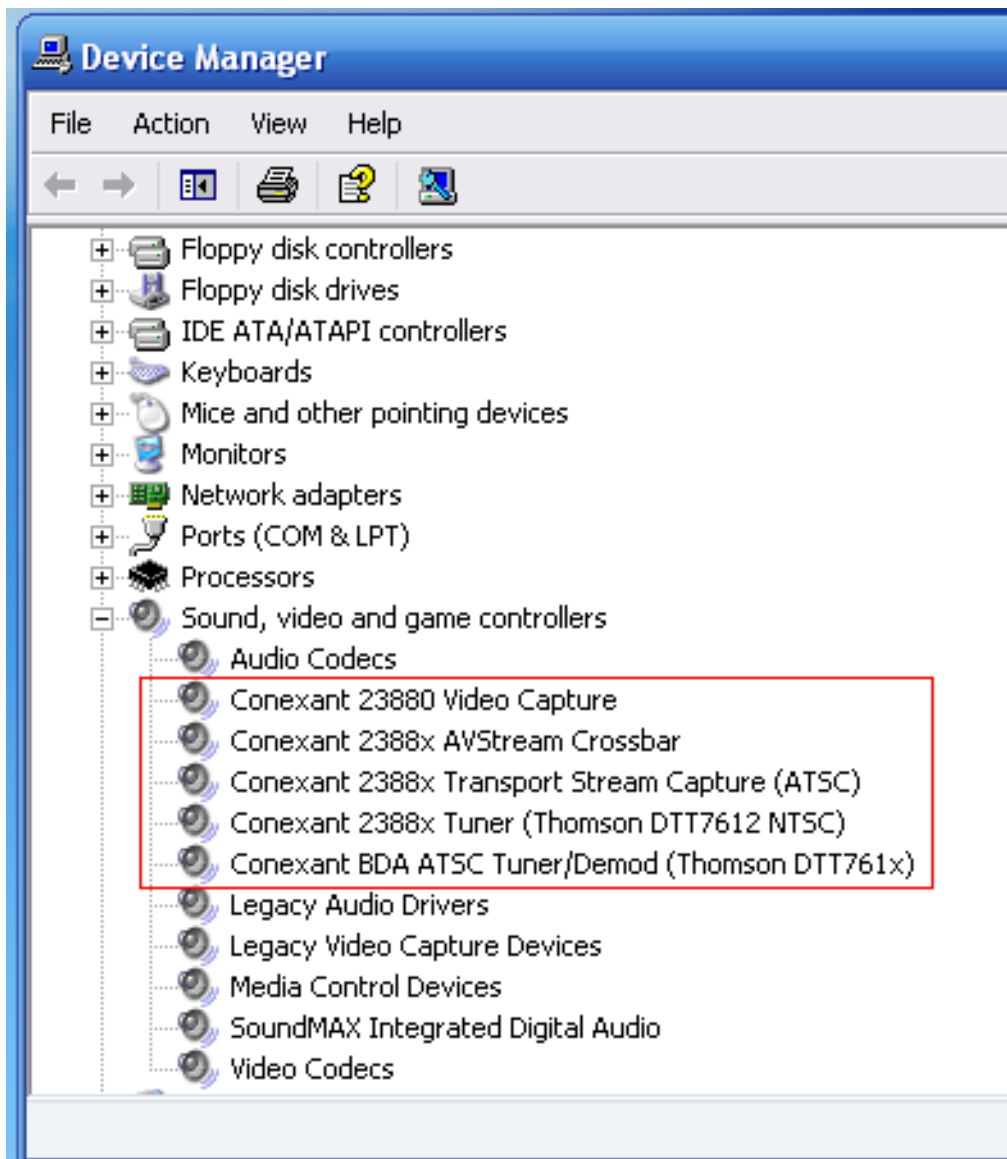
In the Found New Hardware window, a “Please wait...” message appears that lists the found Conexant driver. If the newly installed drivers do not contain certified .cat files along with the driver software, a Hardware Installation window also appears. The absence of .cat files means that Microsoft has not WHQL-certified the drivers. WHQL certification is a process in which Conexant runs and Microsoft certifies test software after the test results have been verified.



14. Click Continue Anyway, allowing the software driver installation process to continue.

The Found New Hardware Wizard “Welcome” window appears for each remaining ATSC card-related hardware device that the Plug-and-Play Hardware Wizard finds during this installation process.

15. Click Next and Continue Anyway as needed until the Welcome window no longer appears.
16. In the Device Manager window, open the Sound, video, and game controllers directory to verify that the drivers have been installed. Several versions of the ATSC card exist, and previous hardware installations may have resulted in driver installations; the list of drivers in the Device Manager will therefore vary. Verify that the Conexant drivers in the outlined box below are listed on screen, which indicates that they have been installed.

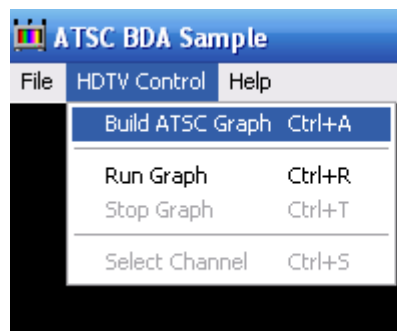


## Functional Verification

---

This chapter describes how to verify that the ATSC card is working properly. The test uses a small, Conexant-designed TV software application, the installed ATSC drivers, and a selected antenna to test the ATSC card.

1. Do one of the following:
  - From the command line, enter "BdaATSC.exe" or
  - Double-click the BdaATSC.exe icon, on your desktop (copied there while performing the steps in [Chapter 3](#)).  
The ATSC BDA Sample window appears.
2. In the ATSC Sample window, select HDTV Control > Build ATSC Graph.



3. Wait a few seconds.
4. Select HDTV Control > Run Graph.  
The sample application builds a graph without your observing it. The window remains blank.

**NOTE:**

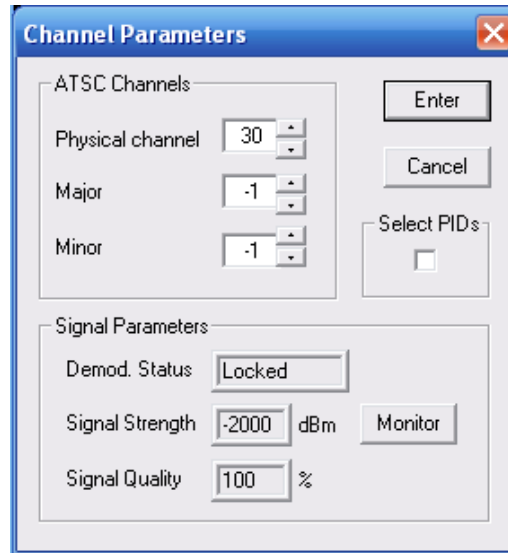
If the sample application is not able to build a graph, an error message appears, as follows:

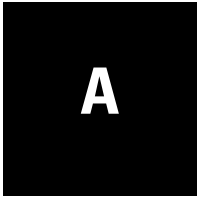
If your PC is running the Microsoft XP or XP Pro operating system, two possible causes of an error message are: (1) missing or corrupt software MPEG decoder or (2) incorrect Conexant ATSC card installed. For causes other than these, contact a Conexant FAE to help resolve.

If your PC is running the Microsoft MediaCenter operating system, two possible causes of the error message are: (1) a software MPEG-2 decoder is not currently present on the PC or (2) the installed graphics card is too old to be compatible with the MediaCenter operating system, requiring that it be replaced with a newer graphics card.

5. Select HDTV Control > Select Channel.  
A tuning window appears with the default settings for the test application.

6. Select HDTV Control > Select Channel.  
A Channel Parameters window appears with the default settings for the test application, similar to the following.



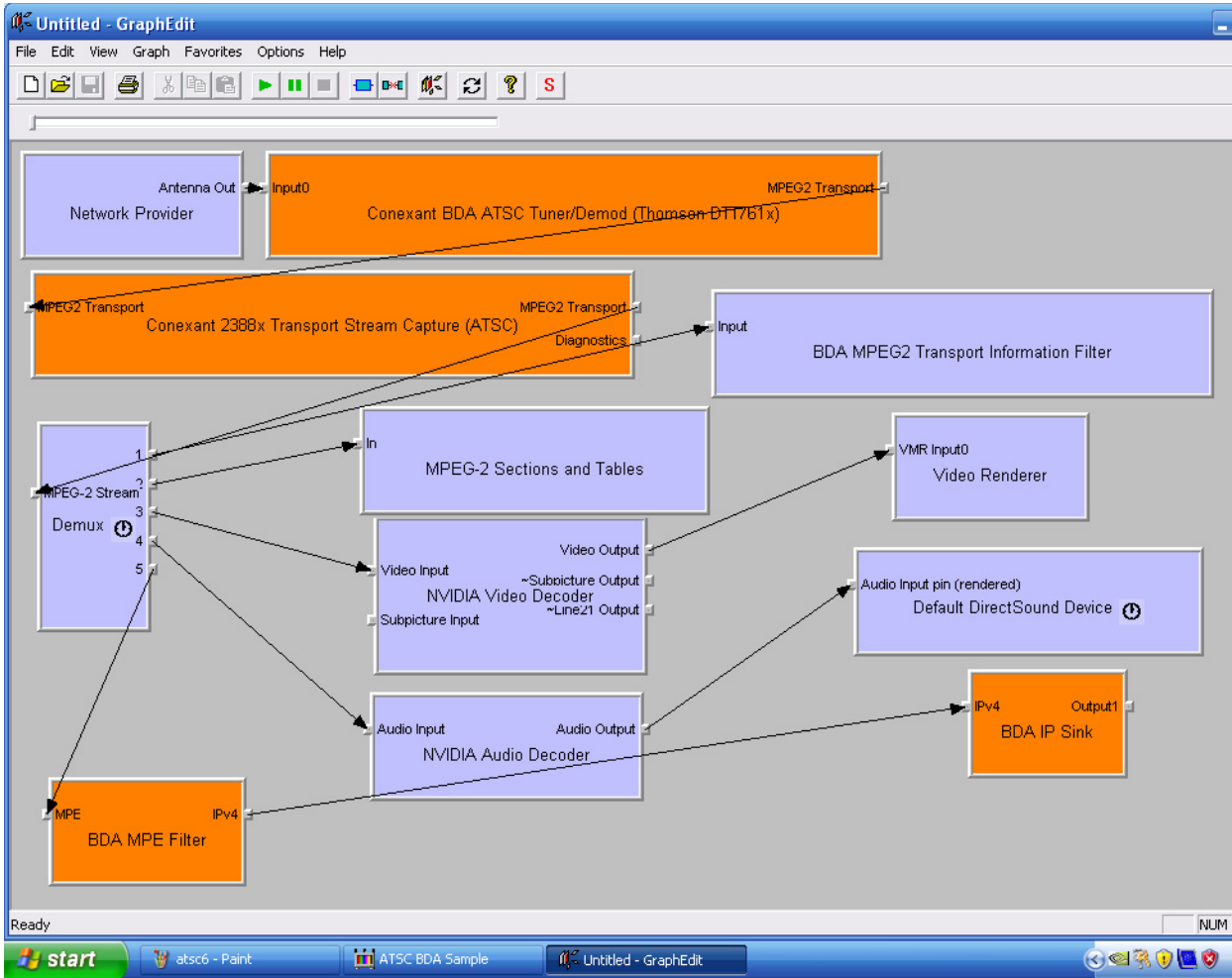


# Graphedit Sample Graph

This appendix provides an example of a graph built by the ATSC Sample Application and then copied using the Graphedit application. In this example, an InterVideo software MPEG decoder was installed on the PC.

Figure 3 shows the sample graph.

Figure 3. ATSC BDA Sample Application Graph from Graphedit







[www.conexant.com](http://www.conexant.com)

General Information:

U.S. and Canada: (888) 855-4562

International: (732) 345-7500

Headquarters – Red Bank

100 Schulz Drive

Red Bank, NJ 07701

